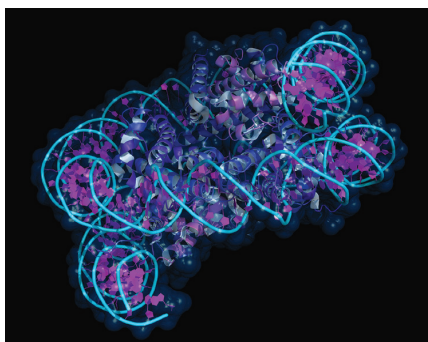


Chromatin Immunoprecipitation Sequencing



ChIP-Seq provides genome-wide profiling of DNA targets for histone modification, transcription factors, and other DNA-associated proteins. It combines the selectivity of chromatin immuno-precipitation (ChIP) to recover specific protein-DNA complexes, with the power of next-generation sequencing (NGS) for high-throughput sequencing of the recovered DNA. Additionally, because the protein-DNA complexes are recovered from living cells, binding sites can be compared in different cell types and tissues, or under different conditions. Applications range from transcriptional regulation to developmental pathways to disease mechanisms and beyond.

At Novogene, we provide high-quality sequencing and comprehensive bioinformatics solutions for your ChIP-Seq projects.

Novogene Advantages



Cost-Effective and Quick Turnaround:

Rapid and efficient genome-wide profiling of multiple samples at a very competitive price.



Extensive Experience:

Over 2000 projects successfully completed.



Comprehensive Analysis:

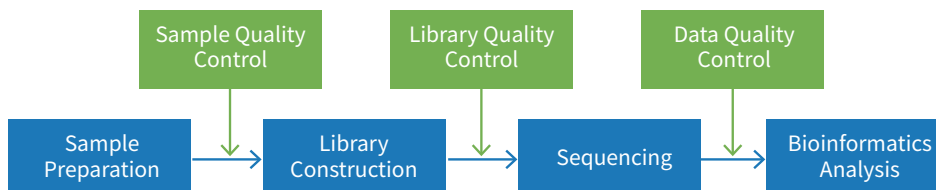
Using the widely accepted MACS2 software and the latest programs for peak annotation, motif prediction, functional analysis and data visualization, we offer analysis solutions to meet your project needs.



Data and Analysis Guarantee:

Our team of experienced scientists ensure the data and analysis quality to be publication ready.

Project Workflow



Specifications

✓ SEQUENCING STRATEGY

- 100-500 bp insert DNA library (depending on peak distribution)
- NovaSeq platform, paired-end 150 bp

✓ TURNAROUND TIME

- 15 working days for 20 or fewer samples from verification of sample quality without data analysis

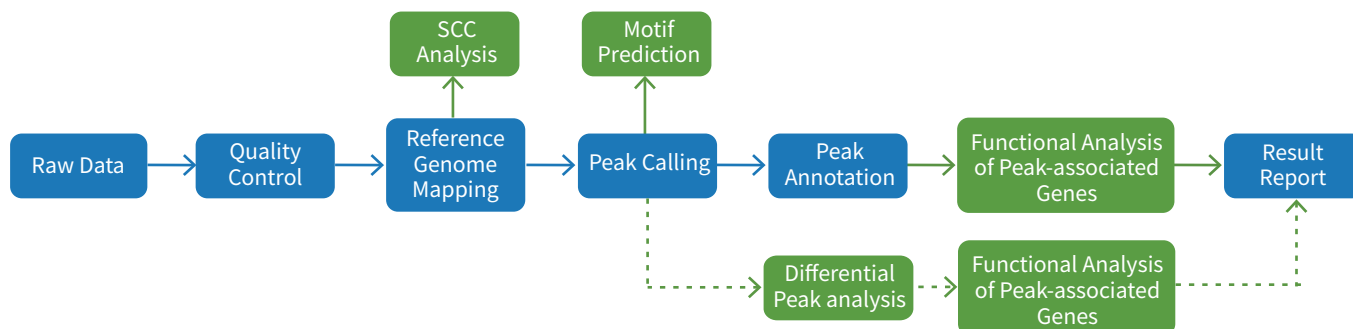
✓ SAMPLE REQUIREMENTS

- DNA quantity: ≥ 20 ng
- Sample volume: ≥ 10 μ l
- Main peak of 100 bp-500 bp

✓ RECOMMENDED DATA OUTPUT

- ≥ 12 Gb per sample

Analysis Pipeline



-----> Only applicable for projects with comparable experimental groups.

Novogene Powered Publications

Year	Journal	Title
2021	<i>Cell Reports</i>	The Mediator subunit MED20 organizes the early adipogenic complex to promote development of adipose tissues and diet-induced obesity
2021	<i>Journal of Molecular Cell Biology</i>	Ablation of Zfhx4 results in early postnatal lethality by disrupting the respiratory center in mice
2020	<i>Cell Death & Disease</i>	LncRNA MNX1-AS1 promotes progression of intrahepatic cholangiocarcinoma through the MNX1/Hippo axis
2020	<i>Nucleic Acids Research</i>	Histone chaperone FACT represses retrotransposon MERVL and MERVL-derived cryptic promoters
2019	<i>Cancer Research</i>	SET Domain-Containing Protein 4 Epigenetically Controls Breast Cancer Stem Cell Quiescence

For Research Use Only. Exclusive for Clients in North and South America.



Follow us on LinkedIn

Novogene Corporation Inc.

📍 8801 Folsom Blvd #290, Sacramento, CA 95826

☎ 916-252-0068 ext. 383

✉ inquiry_us@novogene.com

🌐 www.novogene.com

Copyright©2011-2023 Novogene Corporation.

All Rights Reserved. Information and specifications are subject to change at any time without notice.